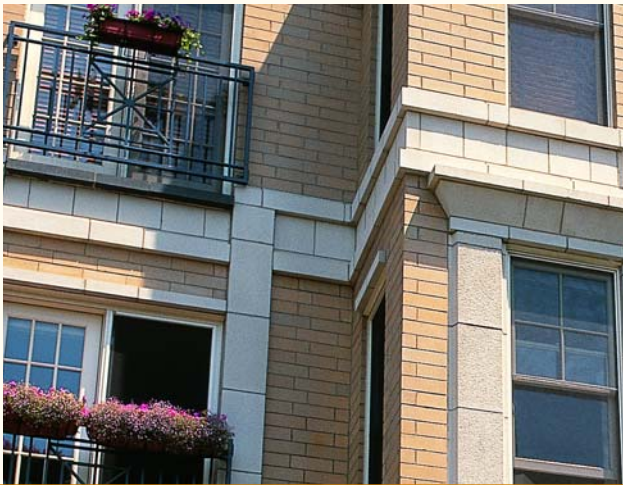




**PRAIRIE**stone

THE BEAUTY OF NATURAL STONE  
THE ADVANTAGE OF CONCRETE MASONRY



INTRODUCING CHISELFACE AND A HOST OF NEW COLORS

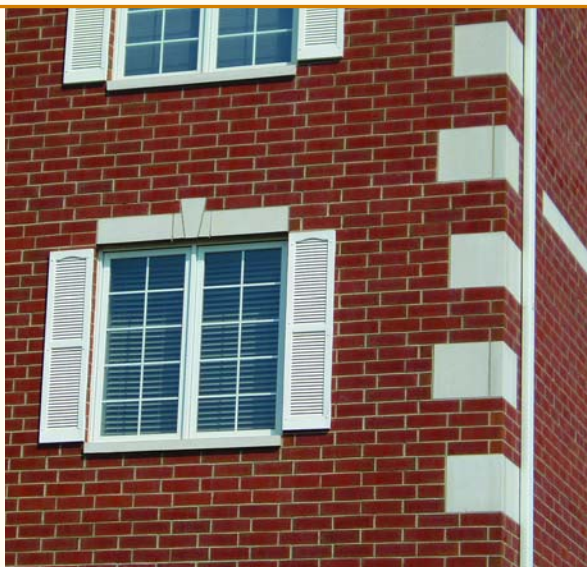


# The Performance you Expect The Economy you Want

From top to bottom, PRAIRIE stone can economically supply you with the look and feel of natural limestone or cast stone. PRAIRIE stone delivers the prestigious appearance which has remained a desired look for centuries. This high-quality masonry product adds beauty and elegance to all architectural, commercial or residential projects.



Brookside Place | Shalvis Group | Blackwater Development Co.



PRAIRIE stone is very durable and will outlast many other alternative products.

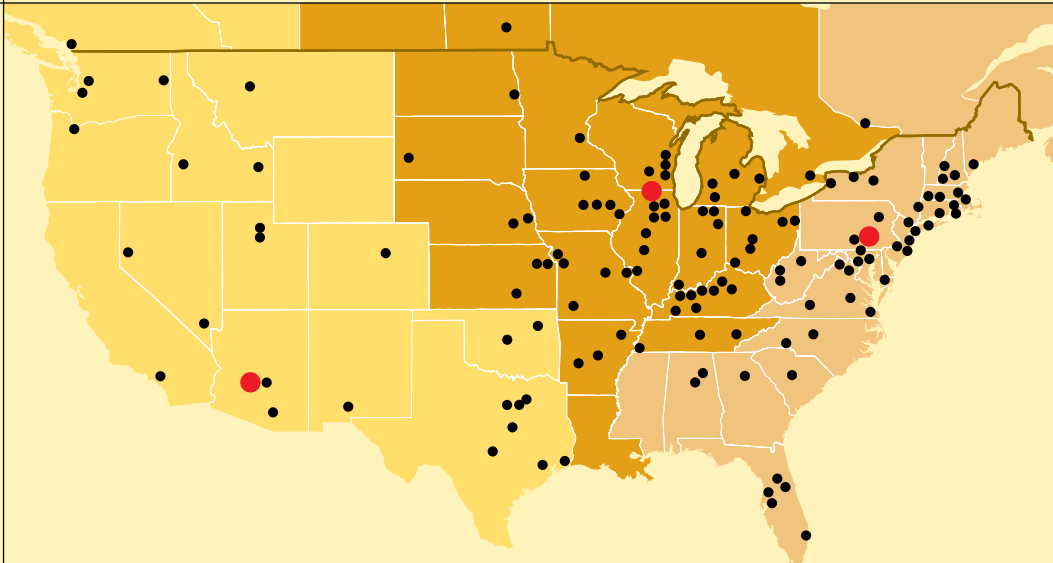
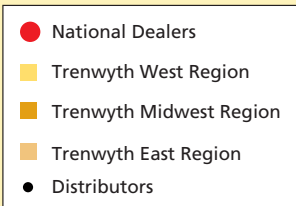
And the best part about it...

***it's affordable!***

PRAIRIE stone is a high-density, water resistant masonry product that can be used above grade, at grade or even below grade level. Our stone is designed to withstand the harshest elements. At Northfield Block, we design quality and economy into all of our products to ensure that they are made to last.

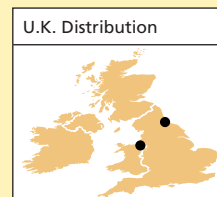
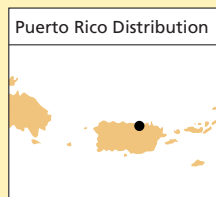
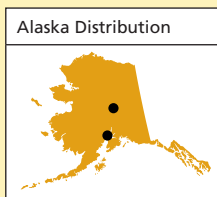
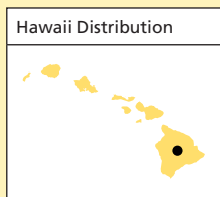


## PRAIRIE stone Geographic Reach



**Manufactured By:**  
Northfield Block Company  
*An Oldcastle Company*  
Mundelein, Illinois

**Distributed Nationally By:**  
Trenwyth Industries  
*An Oldcastle Company*  
South Beloit, Illinois  
(800) 358-3003

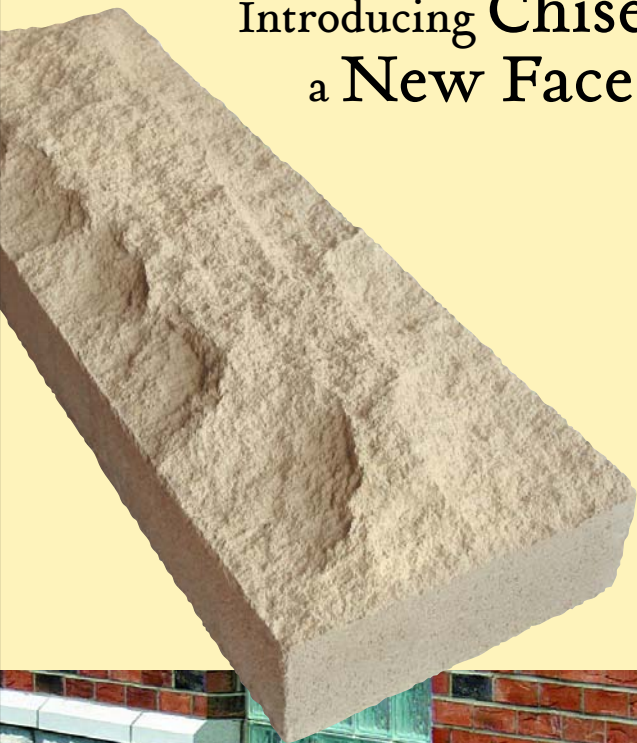


## The PRAIRIE stone Advantage

- All natural aggregates
- Denser than concrete block
- Tight tolerances on all units
- Aggregate color consistent throughout product
- Great flexibility in customizing sills, arches, coping units & large size units
- Integral water repellent
- Easily cut and shaped in the field
- May combine veneer with through-wall applications
- Short lead times from our centralized manufacturing location



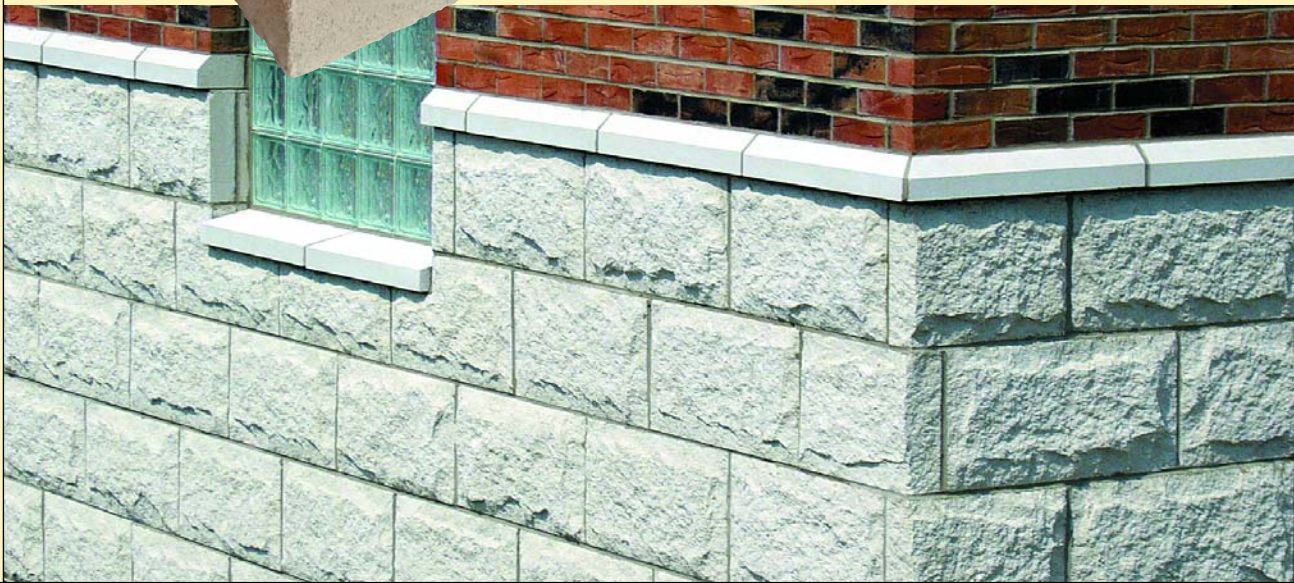
# Introducing Chiselface: a New Face from PRAIRIE stone



We've added a new hand-chiseled look of naturally cut limestone throughout our entire product line. We've engineered a process that enables us to achieve the randomly sculpted look and feel of naturally mined stone. Incorporating **Chiselface** will bring a timeless and sophisticated quality to your next design.

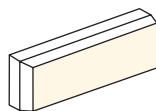
### Expand your creativity, not your budget.

See how Chiselface can economically enhance other parts of your overall design. Combined with different textures and colors, your project will be considered the "best on the block."

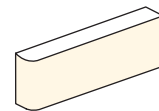


## Select Shapes and Sizes

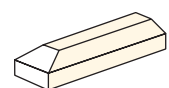
We offer many creative shapes and sizes in the PRAIRIE stone product line. State-of-the-art equipment is used for customizing standard units to fit your special design needs. Inquire about the endless ways that we can shape, cut and tool PRAIRIE stone into the pieces that bring your design concept together.



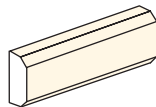
Chamfer Top and End



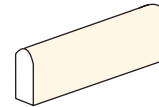
Bullnose End\*



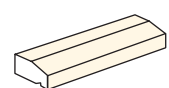
Pier Cap\*



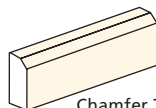
Double Chamfer



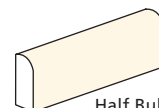
Full Bullnose\*



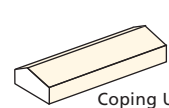
Sill Block\*



Chamfer Top



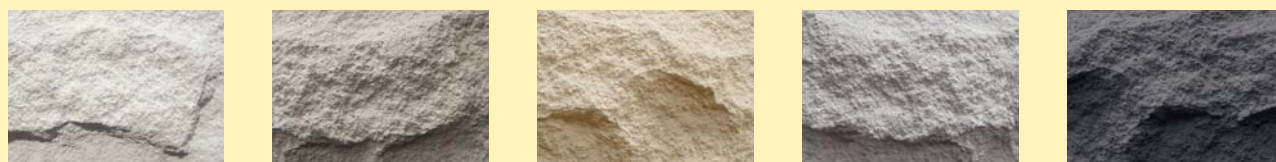
Half Bullnose\*



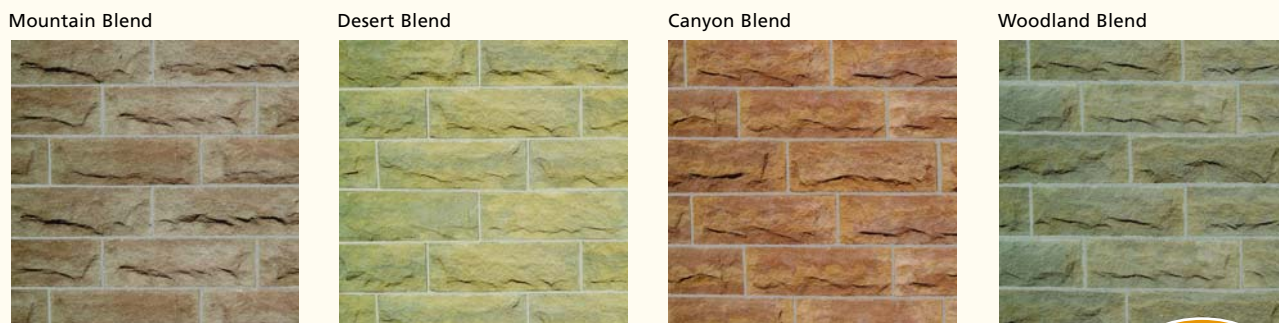
Coping Unit\*

## Natural Colors and Textures

	Alabaster	Limestone <i>(new color)</i>	Buff	Graphite <i>(new color)</i>	Midnight
Groundface					
Rockface					
Textureface					

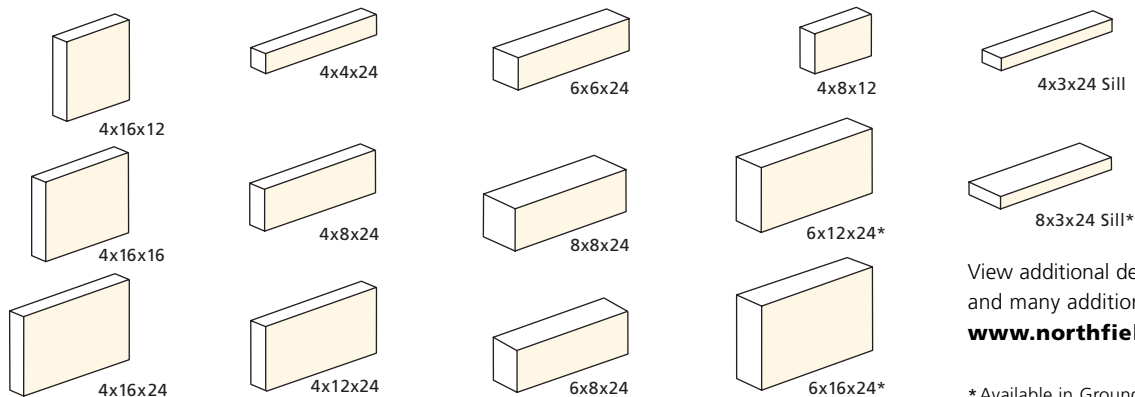


Introducing our new **Earth Blend Collection:**  
a unique combination of blended colors for our Chiselface and Rockface units.



**Note:** The individual colors & textures shown are a representation of the actual color. Contact your local dealer for a physical sample to determine color selection.

Call a dealer in your area for a sample.



View additional design details, corner units and many additional shapes and sizes at [www.northfieldblock.com](http://www.northfieldblock.com)

\*Available in Groundface only

## PRAIRIE stone Physical Properties

Unit Size	Weight Per Unit	Square Foot Coverage Per Unit
4x4x24	24	0.67
4x8x24	48	1.34
4x12x24	77	2.00
4x16x24	103	2.67
4x12x16	48	1.34
4x16x16	65	1.78

## PRAIRIE stone vs. ASTM C-90 Specifications

	ASTM C-90 Specifications	PRAIRIE stone
Absorption (lbs./cu. foot) per ASTM C-140	13 Maximum	5.11
Compressive Strength per ASTM C-140	1900 Minimum	5419 Average
Density (lbs./cu. foot) per ASTM C-140	125 + Normal Weight	135.16
Shrinkage per ASTM C-426	0.065	0.030
Freeze Thaw Durability per ASTM C-1262	10% Maximum	< 1%

## Design Criteria

**Control Joints should be no more than 20' apart.**

### Location of Control Joint:

- Approx. 4' – 6' from corners
- All inside corners, especially at wall piers/columns
- At the corner/side of any large opening or window (If openings are over 6', locate at both sides.)

**4" horizontal joint reinforcing wire installed every 16" O.C.**

When using 12" or 16" tall units, install every course. This will greatly reduce or eliminate shrinkage or movement hairline cracks.

**Use W.R. Grace DRY-BLOCK® water repellent additive in the mortar.**

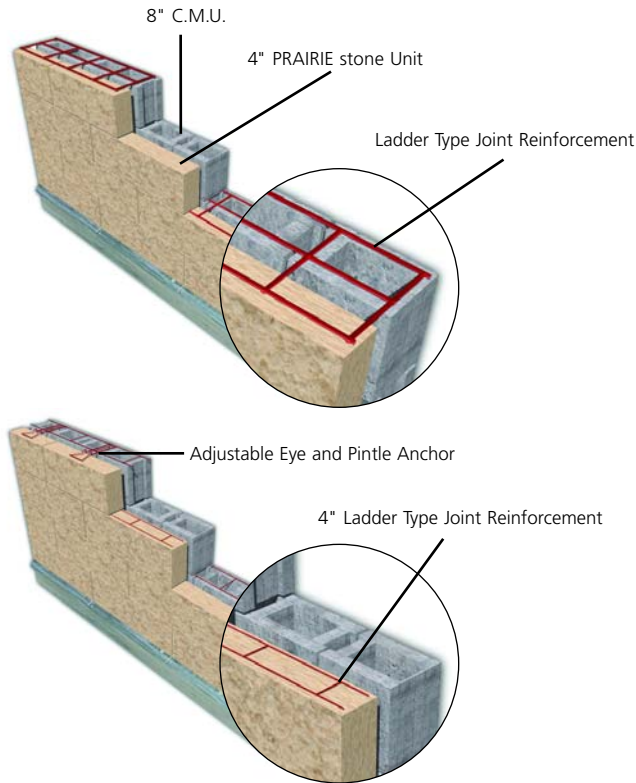
All PRAIRIE stone units are manufactured with DRY-BLOCK. Adding DRY-BLOCK to the mortar will increase mortar bond strength and will compliment the DRY-BLOCK already in the PRAIRIE stone units making for a wall with greatly improved water resistance properties.

**Use "Type N" mortar.**

Type S mortar is too brittle and may create hairline shrinkage cracks.

**Rake and caulk all window sill and coping unit head joints.**

1717 Prairie Street | W.O.W. Architects | Hansen + Hempel Co.



Continuous horizontal joint reinforcement is recommended in the exterior wythe every 16" or every course with 12" and 16" high units.

PRAIRIE stone can be installed using block, wood or metal stud back-up structures.



# PRAIRIE stone Unit Specifications

## Part 1: General

### Submittal

Submit product literature, unit shop drawings, certification, test reports, full size sample(s) of each color selected.

### Quality Assurance

All high-density prefinished concrete masonry units shall be PRAIRIE stone masonry units manufactured by Northfield Block Company. All units shall conform to ASTM C-90 and shall have either a *Rockface*, *Groundface*, *Textureface* or *Chiselface* finish as shown on the drawings.

**Field Constructed Mock-up:** Construct a sample panel, no less than 4' x 4', of units of each color and size to be used in the project. The cleaning agent and method should also be determined and applied at the time the sample panel is constructed.

### Delivery, Storage, and Handling

PRAIRIE stone units shall be delivered to the jobsite banded on wood pallets. Each exposed face shall be protected by a plastic protective layer. Each edge of a cube shall be protected by a pre-molded edge protector. Each cube shall be covered with a clear plastic wrap. Pallets shall be stored in single-stacks on level ground and covered with a water-proof covering (e.g., tarpaulins) to protect the units from inclement weather. Units must be handled carefully to avoid breakage and damage to the finished surfaces.

### Project/Site Conditions and Handling

Cover walls each day after installation to keep open walls protected and dry.

## Part 2: Products

### Product Name

PRAIRIE stone Masonry Units

### Manufacturer

Northfield Block Company  
One Hunt Court  
Mundelein, Illinois, 60060  
847-816-9000 (PH)  
847-816-9072 (FAX)

## Part 3: Execution

### Laying Masonry Walls

Lay units using the best concrete masonry practices. Install only quality units; reject all defective units. Align units level, plumb, and true with uniform, carefully-tooled  $\frac{3}{8}$ " wide joints on the finished side of the wall (*no raked mortar joints*). Draw blocks from two or more pallets at a time during installation. Use a water repellent mortar additive, following the manufacturer's instructions, for all exterior walls.

### Installation

**Lighting:** Provide adequate lighting for masonry work by placing all lighting a reasonable distance from the wall for even illumination. Do not use trough lighting.

**Cutting:** Make all unit cuts, including those for bonding, holes, boxes, etc., with motor-driven masonry saws, using either in abrasive or diamond blade. Cut neatly for best appearance.

### Inspection

The facing shall be free from chips, cracks, crazes or any other imperfection that would detract from the overall appearance of the finished wall when viewed from a distance of twenty (20) feet at right angles to the wall with diffuse lighting.

### Flashing of Masonry Work

Install flashing at locations shown in the plans and in strict accordance with the details and the best masonry flashing practices.

### Weep Holes and Vents

Install weep holes and vents at proper intervals (32" O.C. and 2" long, above bed joints, typical) at courses above grade, above flashing, and at any water stops over windows, doors, and beams.

### Cleaning

Keep walls clean daily during installation using brushes, rags, and burlap squares. Do not allow excess mortar lumps or smears to harden on the finished surfaces. Remove green mortar with burlap or a dry cloth. Harsh cleaning methods after walls have been erected may mar the surface of the units.

### Final Cleandown

No acid or acid base solutions shall be used in the cleaning of PRAIRIE stone units. A detergent masonry cleaner shall be used following the manufacturer's instructions and the surface shall be thoroughly rinsed with clean water. *High pressure washing is not recommended.*

### Maintenance

PRAIRIE stone units, properly installed and cleaned, need virtually no maintenance other than routine cleaning with standard commercial-grade cleaning agents. Graffiti, paint or dye stains may need special cleaning methods and products. Contact manufacturer for specific cleaning recommendations.

### Installation Recommendations

- Cavity wall construction is recommended for exterior walls, with proper flashing, venting, and weep holes.
- A complimentary or matching mortar color is recommended when using PRAIRIE stone units.
- **Continuous horizontal joint reinforcement** is recommended every 16" and in every course when using units 12" or taller.
- **Control joints** are recommended approximately every twenty (20) feet, at inside corners, near outside corners and at the corner/side of windows and large openings.

### Limitations

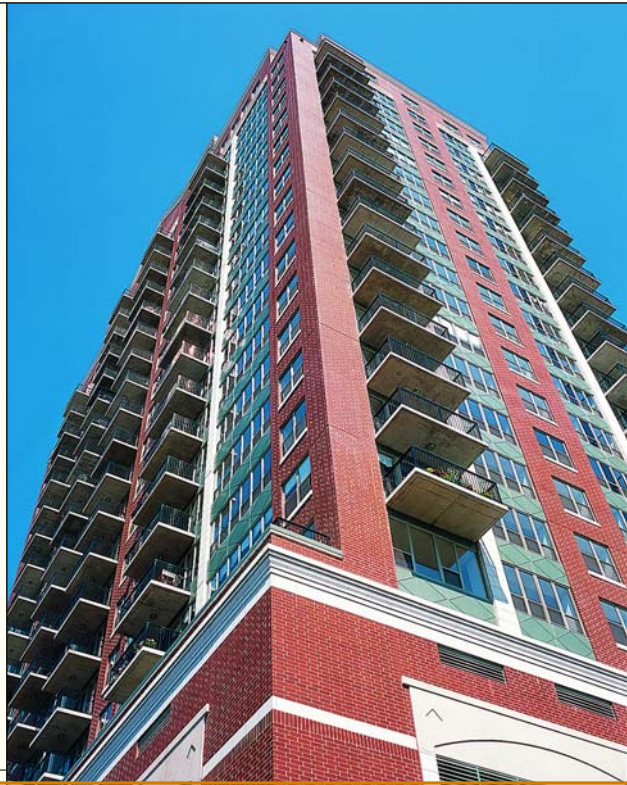
- The facing is not intended for use as an impervious surface.
- Acid solutions should not be used as a cleaning agent or in direct contact with the facing.
- The facing should not be continuously exposed to temperatures above 250° F.

**Northfield Block Company**

Part of the industry since 1949, Northfield Block Company has become a leading manufacturer of masonry products in the Midwest.

Centrally located in the U.S., our state-of-the-art facilities feature automated processes that can create a diversity of custom products. Specialized concrete masonry units such as PRAIRIE stone are among the wide pallet of products offered by Northfield Block Company.

Quality and service have long been the hallmarks of Northfield Block Company. Our dedicated and creative teams of craftsmen continually strive to create new masonry products that will meet and surpass the needs of today's design community.



Noble Street Condominiums | Elk Construction Inc. | Arts Masonry

Prairie District Tower | W.O.W. Architects | Hansen + Hempel Co.



**Manufactured By:**



Northfield Block Company  
*An Oldcastle Company*  
One Hunt Court  
Mundelein, IL 60060  
(847) 816-9000  
(847) 816-9072 Fax  
[www.northfieldblock.com](http://www.northfieldblock.com)

**Distributed Nationally By:**



Trenwyth Industries  
*An Oldcastle Company*  
208 Charles Avenue  
South Beloit, IL 61080  
(800) 358-3003 Toll Free  
(815) 389-3003 Main  
(815) 389-3214 Fax

